



# **INSTALLATION PROCEDURES**

## **FOR LAN NET WORK**

### **INTERFACE**

**Rev: 09.12.15**

**THIS INTERFACE KIT IS FOR USE WITH  
CARDMASTER AND THE FOLLOWING  
COMPUTER  
OPERATING SYSTEMS:**

**WINDOWS 95®; 98®; 2000®;  
XP®, VISTA®, WINDOWS 7®**

**THE FOLLOWING ITEMS ARE SUPPLIED WITH  
THE LAN KIT:**

**1 MOXA™ ETHERNET SERIAL SERVER  
1 REPLACEMENT HARNESS FOR 12V TO PS**

**THIS UNIT HAS BEEN TESTED FOR OPERATIONAL  
COMMUNICATION ON THE LAN BETWEEN THE  
CAMASTER AND PC.**

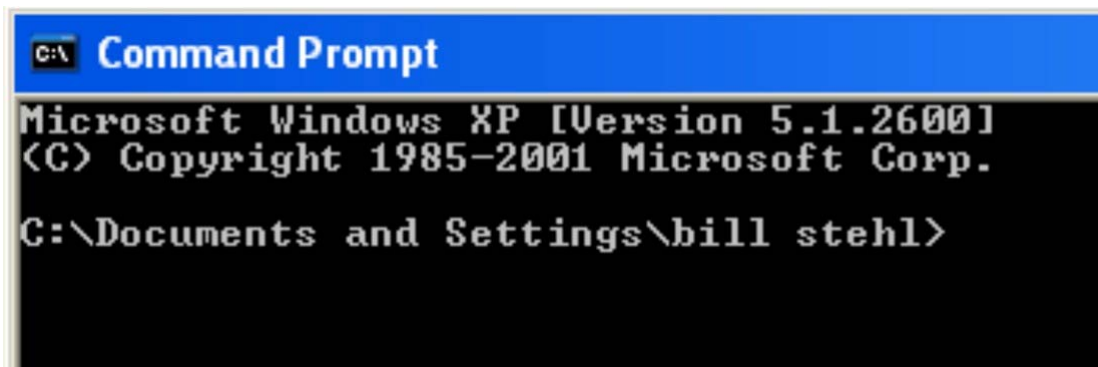
**FOR INSTALLATIONS ACROSS NETWORKS OR  
REMOTE WANS PERFORM THE FOLLOWING  
STEPS ON THE HOST NETWORK PC AND THEN  
MOVE THE MOXA TO THE CARDMASTER  
REMOTE SITE.**

## **INSTALLATION**

1. Click on the “Start” Icon on your Desktop screen.
2. Move the cursor to the “Program” key and then to the

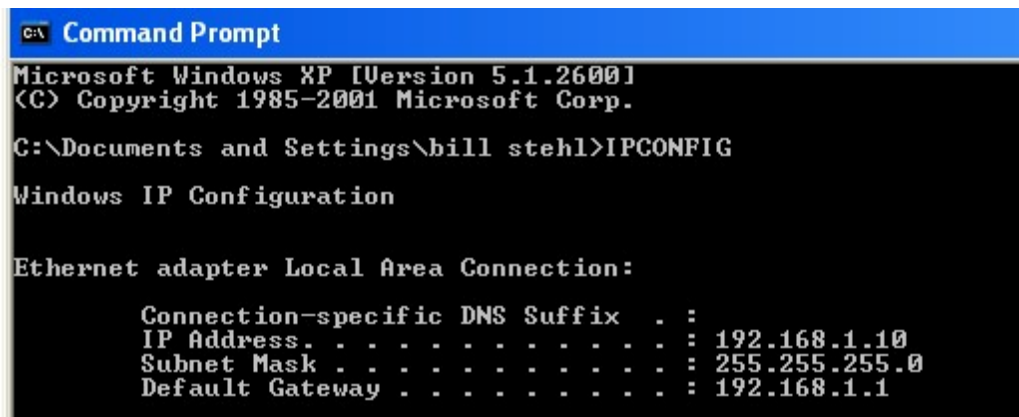
“Accessories” key, then to “Command Prompt” and click your mouse button. The following DOS screen will appear.

**NOTE: NEWER OPERATING SYSTEMS PLACE THE COMANND PROMPT IN DIFFERNENT LOCATIONS. REFER TO YOUR OPERATING SYSTEM MANUAL FOR HELP LOCATING.**



```
C:\ Command Prompt
Microsoft Windows XP [Version 5.1.2600]
(C) Copyright 1985-2001 Microsoft Corp.
C:\Documents and Settings\bill stehl>
```

3. At the cursor type the following command: ipconfig <return>
4. The following screen should appear:



```
C:\ Command Prompt
Microsoft Windows XP [Version 5.1.2600]
(C) Copyright 1985-2001 Microsoft Corp.
C:\Documents and Settings\bill stehl>IPCONFIG
Windows IP Configuration

Ethernet adapter Local Area Connection:

    Connection-specific DNS Suffix . . :
    IP Address. . . . . : 192.168.1.10
    Subnet Mask . . . . . : 255.255.255.0
    Default Gateway . . . . . : 192.168.1.1
```

5. Write down the IP Address; Subnet Mask; and Default Gateway for future use.
6. Exit the Command prompt.
7. Power up the CardMaster with MOXA Unit and attach the LAN cable from the net work.
8. INSERT CDROM INTO YOUR CD DRIVE.
9. Click on the “START” key. Move the cursor to the “RUN” key and click.
10. Click on the “START” key. Move the cursor to the “RUN” key and click.
11. Type one of the following commands into the open window:

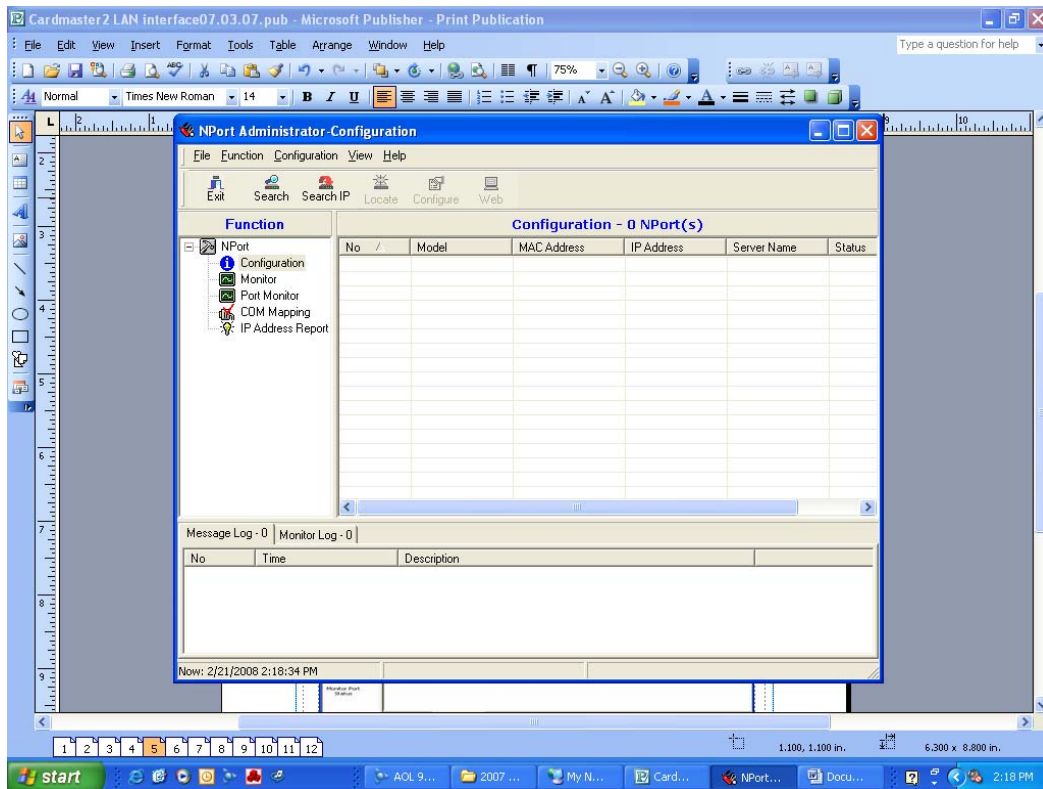
D:install\_98\setup  
D:install\_ME\setup  
D:install\_NT\setup  
D:install\_2K\setup  
D:install\_XP\setup

“D” is the CDROM drive you have inserted the disc into. The Letter designation may vary depending on how your PC is setup.

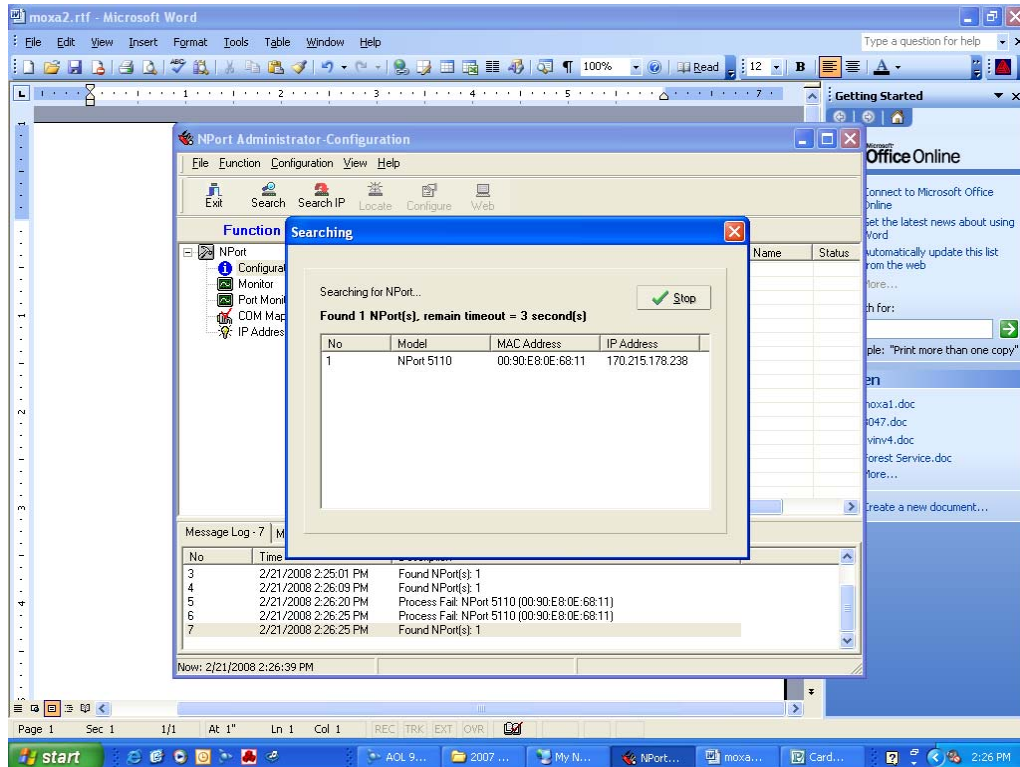
12. After typing the appropriate line in click on “OK”
13. The Installation procedure is outlined in the MOXA® Manual provided.

- Once the Installation of the MOXA® software has been completed click on the “Start” button, then click on “Programs”, then “N Port Administration Suite then “Nport Administrator”. The following screen should appear.

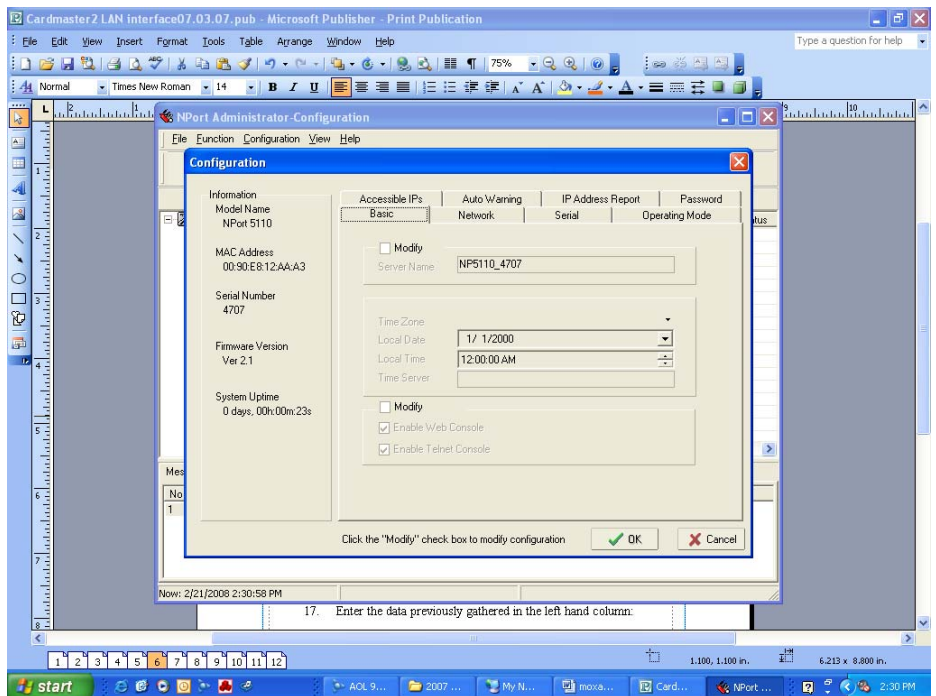
NOTE: VISTA OPERATORS MAY HAVE TO RIGHT CLICK ON THE NportAdministrator icon and chose “run as administrator”



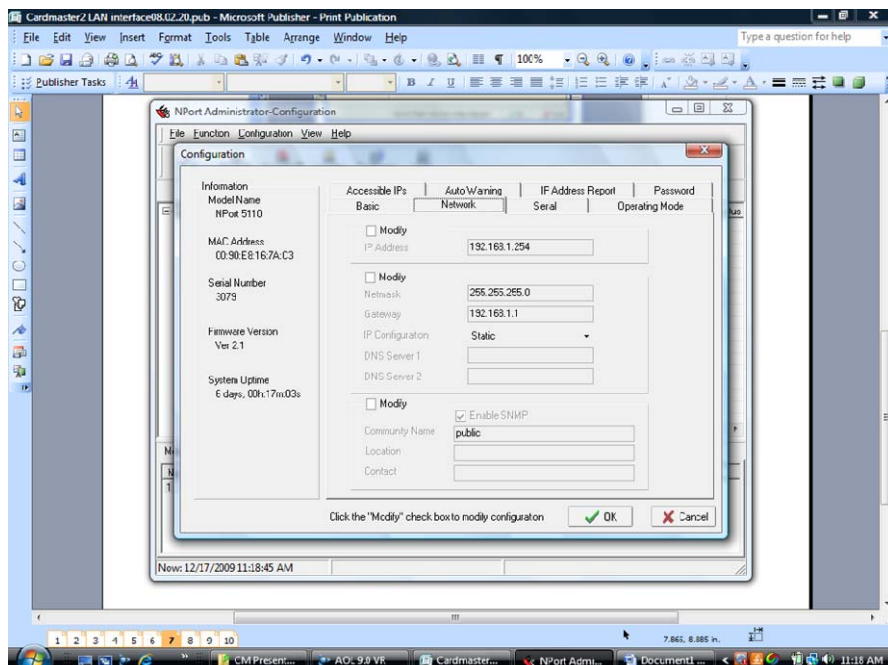
15. Once the previous screen has appeared the click search. The following screen should appear. If the LAN sees the MOXA the default address should appear.



- Once the Software has found the device highlight the field line and click on configure. The following screen should appear.



- Click on the Network Tab. The following screen will appear.



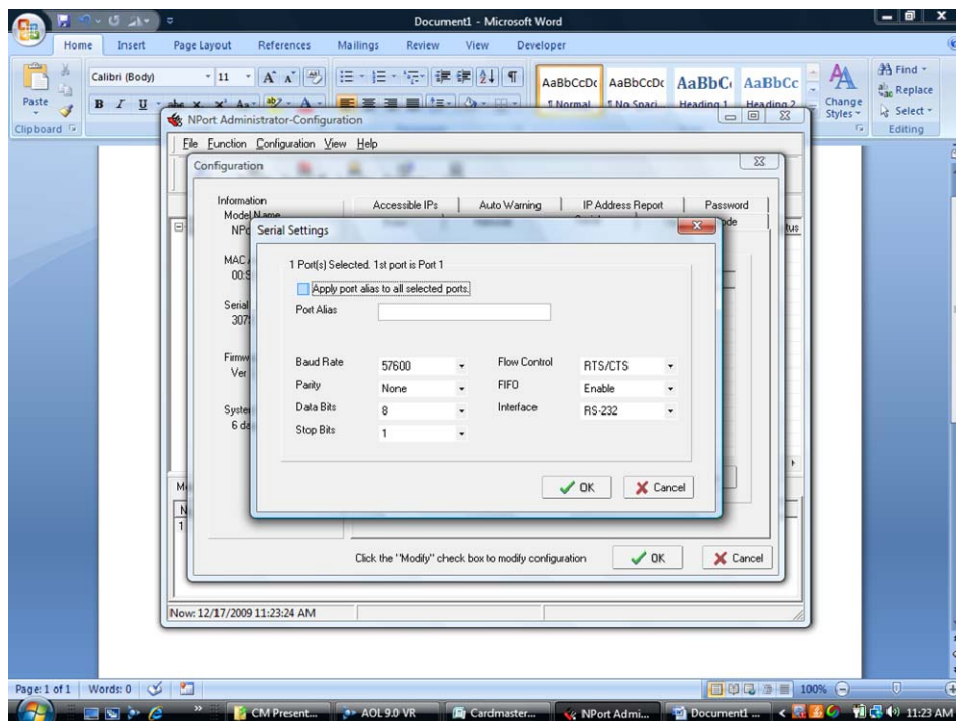
18. Check the Modify box. Enter the data previously gathered in the left hand column:

IP Address:  
Netmask:  
Gateway:

This should match the address gathered earlier except for the last set. This will be a new location assigned by your administrator.

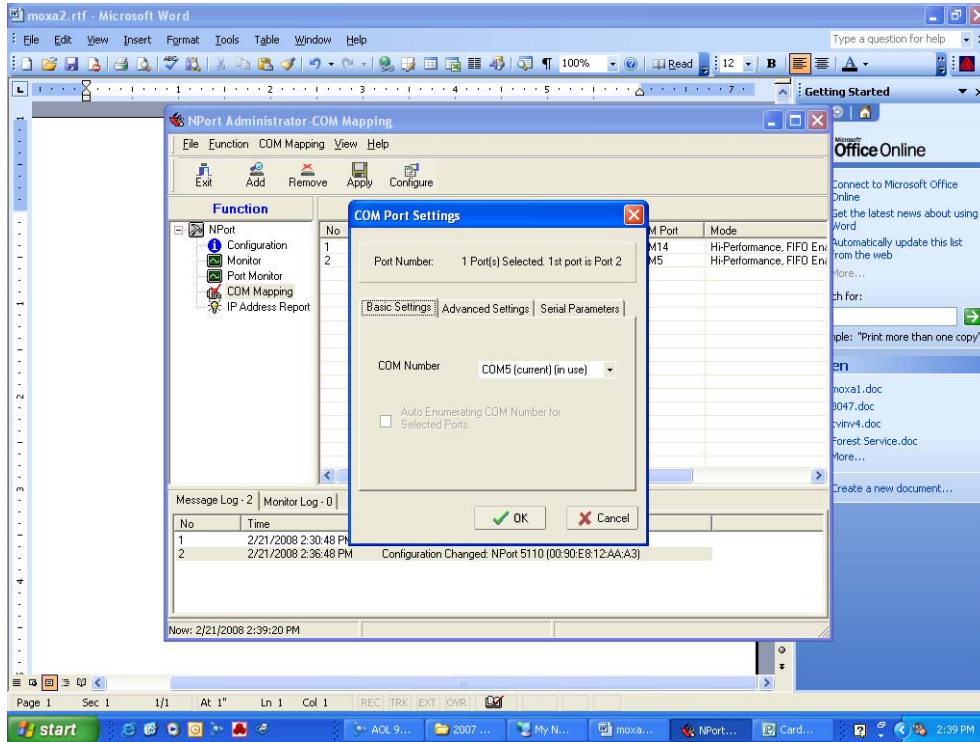
19. Click on the Serial TAB and click Modify  
Enter the communication parameters for the CardMaster in the left hand Column:

Serial Port: 1  
Baud Rate: 9600  
Data/Parity/Stop: 7-N-1 SERIAL  
Data/Parity/Stop: 8-N-1 USB  
Flow control: None  
Connection Mode: Server  
TCP/UDP protocol: TCP  
TCP/UDP port: 4000  
Remote IP Address: 255.255.255.255





20. Click on info line and click on COM Port Mapping The following should appear.



21. Under Basic Settings click on Com Port and choose the Com Port you wish to use.

Once completed click on OK.

Now click on the Apply tab.

Close NportAdministrator.

Now open HyperTerminal and configure as outlined in Installation manual choosing the COM Port utilized in the Moxa Configuration.

Call CardLock Vending for Assistance 425-487-8724