



CARDLOCK VENDING

# WIRELESS RF MODEM SETUP MANUAL FOR CARDMASTER



REV 07.03.12

[www.cardlockvending.com](http://www.cardlockvending.com) customers call 888-487-5040

Installation Manual for CardMaster Wireless modem setup

TABLE OF CONTENTS

PAGE

1                   INSTALLATION MANUAL

2                   SETUP

CONNEXLINK SOFTWARE

3-6               INSTALLATION

7                   PC SETTINGS

8-9               TRANSCIEVER SETTINGS

10                CARDMASTER INTERFACE



## CARDLOCK VENDING

### SET UP

---

#### ITEMS YOU WILL NEED

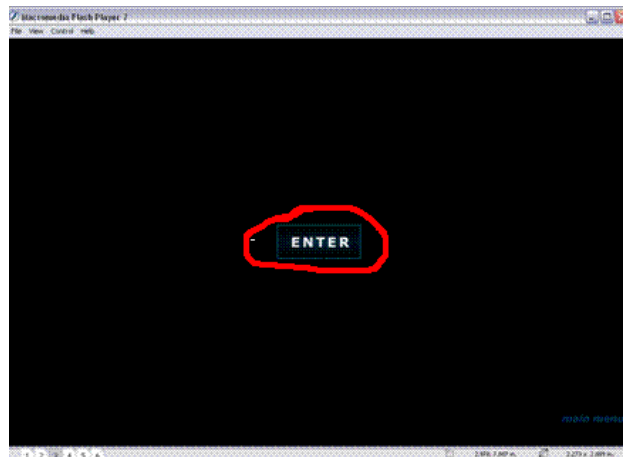
- Included: ConnexLink RF Modem Server and Client , 2 AC power supplies , 2 antenna's , 2 RS-232 cable's and 1 Aerocomm software disk.
  - Not Included: 1 Null Modem, 1 Shorthaul Modem, and 1 PC with Windows 95,98,2000,ME,NT or EXP and a RS-232 serial port.  
(if no 232 port use USB to RS-232 Adapter)
1. Attach antenna's to RF modem's by twisting on and tilting up.
  2. Connect client modem to PC via RS-232 cable, and USB converter if needed.
  3. Power RF modem via supplied AC adapter.

### CONNEXLINK SOFTWARE

---

#### • INSTALLATION

1. Insert AEROCOMM tools & literature disk into PC's CD-ROM. The screen below should pop up.( If not click on my computer then click on E drive)
2. Click on enter.



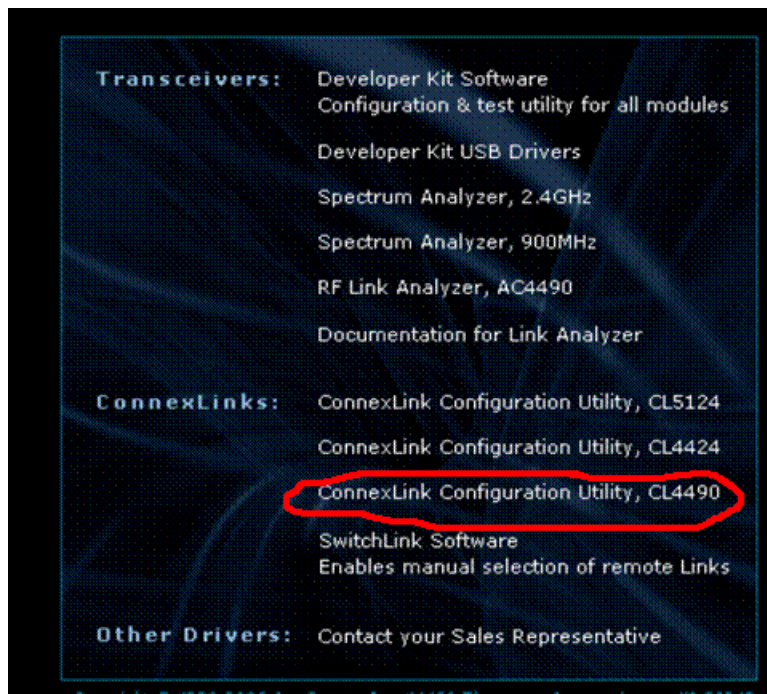


# CARDLOCK VENDING

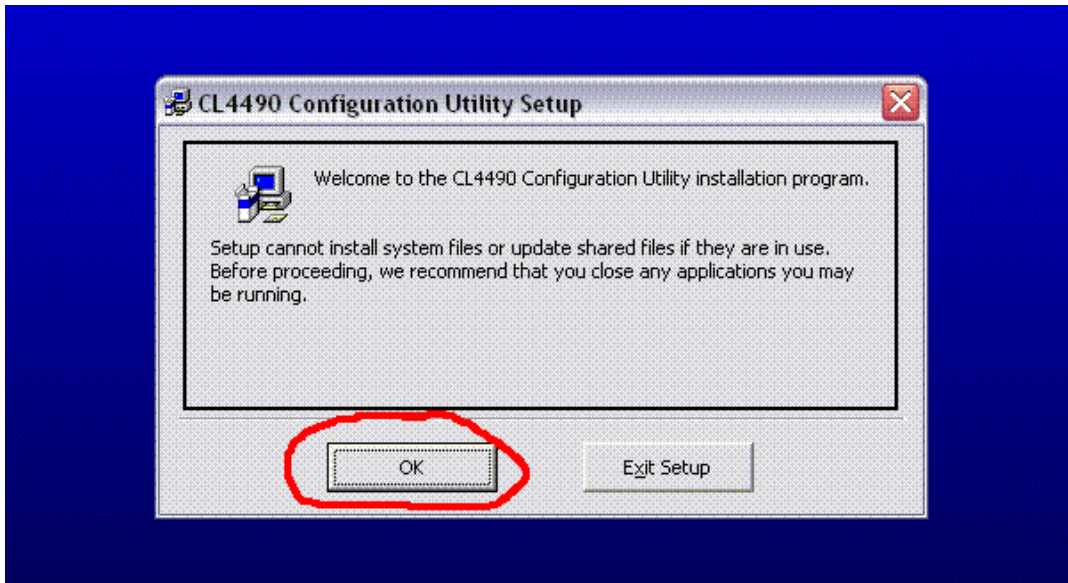
3. Click on Software



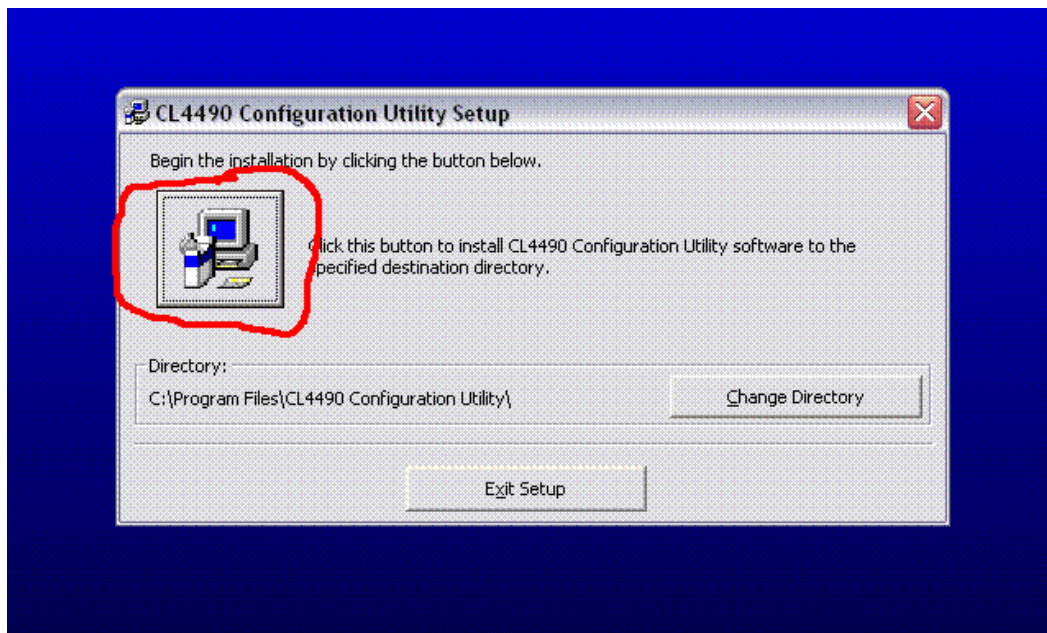
4. Click on Connexlink Configuration Utility, CL4490



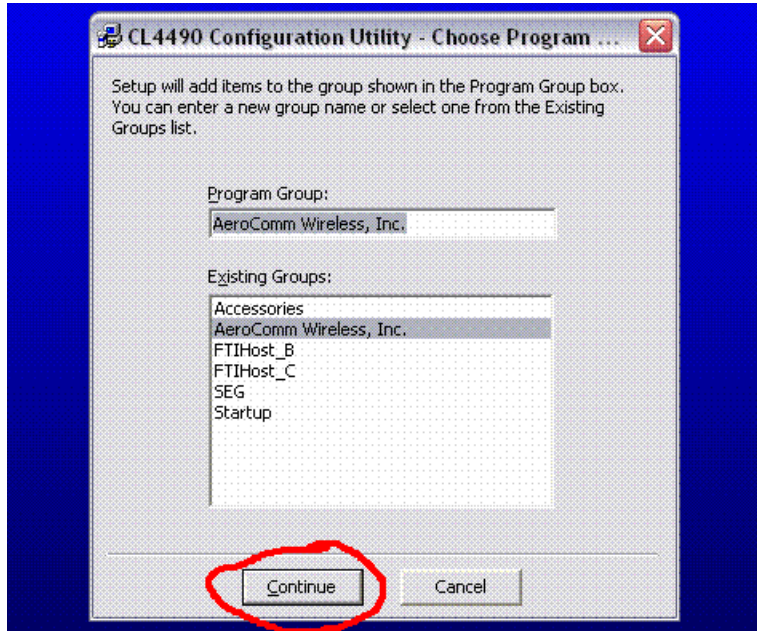
4. Click on OK.



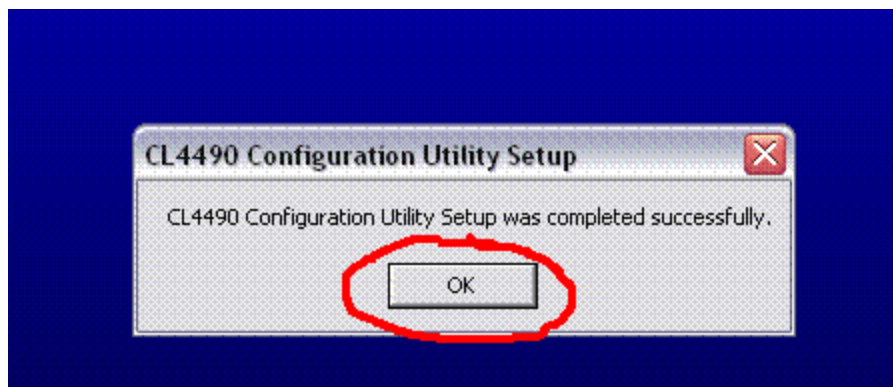
5. Click on the picture of the computer.



6. Click on Continue.



7. Click on Finish.

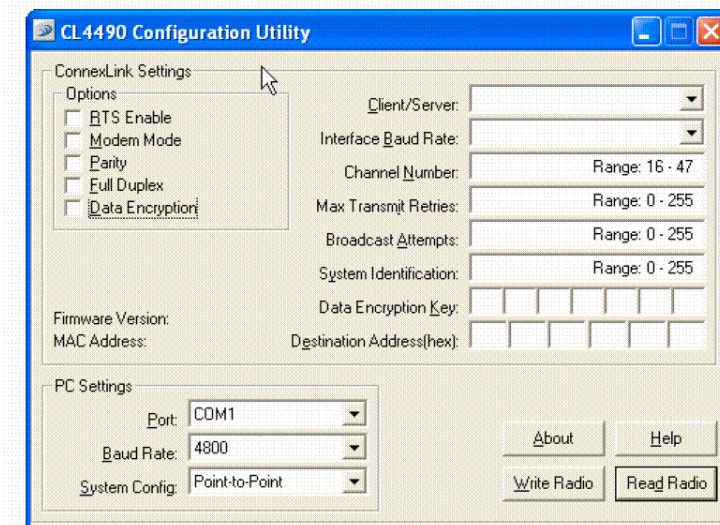


## PC SETTINGS

- Open ConnexLink software by clicking on the CL4490 Icon.
- The ConnexLink settings page is shown below , as it will appear for the first time the program is run.



CL4490 Configuration Utility.LNK



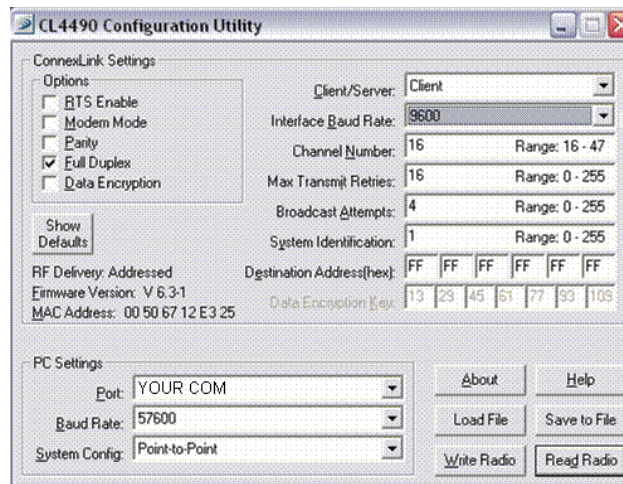
- Basically PC settings is the language that the ConnexLink software speaks to the modems. The default the modems are set for 57600. The CARDMASTER speaks 9600. So we must reprogram the modems one at a time to speak CARDMASTER. After both of the modems have been programmed to 9600 the PC settings BAUD RATE must be changed to match 9600 as they would no longer speak 57600.
1. Find PC Settings on the bottom left hand side of the window. Use the drop down arrow to choose the COM PORT you will be accessing the units thru.
  2. Using the drop down arrow set BUAD rate to 57600.
  3. Using the drop down arrow set the SYSTEM CONFIG to point to point.
  4. With CLIENT MODEM connected to PC and powered with AC adapter click on the READ RADIO button.
  5. Write down the MAC ADDRESS number. You will need it later.





## TRANCIEVER SETTINGS

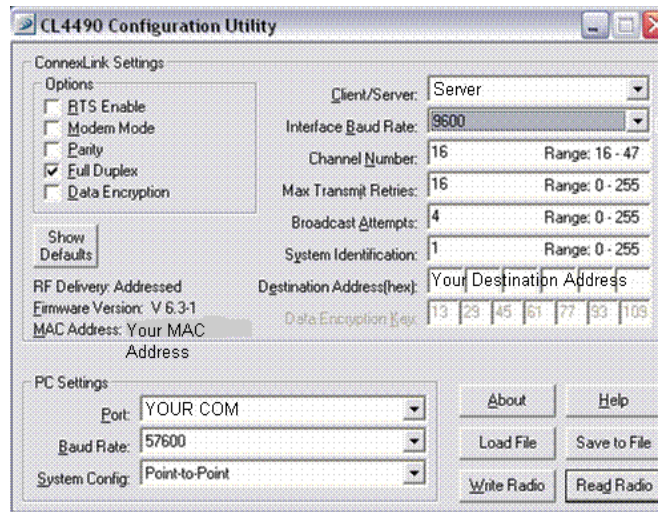
1. Click on the first box in the DESTINATION ADDRESS column. Then type FF FF FF FF FF FF.
2. Change the INTERFACE BAUD RATE to 9600 by clicking on the drop down arrow and then clicking on 9600.
3. In the OPTIONS box at the right hand top of the window. The only box you want to be checked is FULL DUPLEX if it is not checked do so now.
4. Make sure that the ConnexLink settings page matches the one shown below.



5. Click on the WRITE RADIO button to program the CLIENT MODEM.
6. To confirm click on OK.
7. Cycle power so that the new settings will take effect by unplugging and reinserting the AC adapter into the CLIENT MODEM. Now disconnect the CLIENT MODEM from the PC and the AC adapter after the successful operation.
8. Now connect the SERVER MODEM to the PC and the AC adapter.
9. Please double check that the PC settings BAUD RATE is set to 57600 and SYSTEM CONFIG is set to POINT TO POINT.



10. Click on the READ RADIO button.
11. Click on the first box in the DESTINATION ADDRESS column. Then type the MAC ADDRESS number that you recorded earlier in step 5 of PC SETTINGS.
12. Change INTERFACE BUAD RATE to 9600 by clicking on the drop down arrow and then clicking 9600.



13. In the OPTIONS box at the right hand top of the window. The only box you want to be checked is FULL DUPLEX if it is not checked do so now.
14. Make sure the ConnexLink settings page matches the one shown below.
15. Click on the WRITE RADIO button to program the SERVER MODEM.
16. To confirm click on OK.
17. Cycle power so that the new settings will take affect by unplugging and reinserting the AC adapter into the SERVER MODEM after the successful operation.
18. Close the ConnexLink settings page. Now the RF MODEMS ARE configured to operate with the CARDMASTER.

## CARDMASTER INTERFACE

- In order to connect the CLIENT MODEM to the CARDMASTER you will need a SHORThAUL MODEM and a NULL MODEM.
  - A SHORThAUL MODEM converts RS-485 to RS-232 and vice versa.
  - A NULL MODEM simply swaps pins to convert a DCE ( Data Communications Equipment ) to a DTE ( Data Transmission Equipment ) and vice versa. In this case both the PC and the CARDMASTER are DTE's.
1. Starting inside the CARDMASTER locate the RS-485 port on the I/O board. Plug four wire RS-485 cable from SHORThAUL MODEM into CARDMASTER RS-485 port.
  2. Power the SHORThAUL MODEM via the supplied AC adapter.
  3. Connect the 25 pin to 9 pin converter to the SHORThAUL MODEM.
  4. Connect the RS-232 cable to the 25 pin to 9 pin converter.
  5. Connect the NULL MODEM to the RS-232 cable.
  6. Connect the CLIENT MODEM to the NULL MODEM and power via supplied AC adapter.
  7. Check operation from PC (See CARDMASTER PROGRAMERS MANUAL ) go into HYPERTERMINAL CARDMASTER and type a P the PASSWORD prompt should pop up if not double check connections.

